

# 美标压力平衡式倒装油密封旋塞阀 INVERTED PRESSURE BALANCE LUBRICATED PLUG VALVE ACC.TO ANSI



## 产品结构特点 PRODUCT STRUCTURAL FEATURES:

美标压力平衡式倒装油密封旋塞阀使用于公称压力 CLASS150~1500LBS, 工作温度-29~180°C的石油、化工、制药、化肥、电力行业等各种工况的管路上, 切断或接通管路介质。

Inverted pressure balance lubricated plug valve acc.to ANSI is applicable to the cutting and connection of pipelines medium that are used in various industries such as petroleum, chemical industry, pharmacy, chemical fertilizer, electric power industry etc under nominal pressure of CLASS150~900LBS and working temperature of -29~180°C

## 其主要结构特点 Main Structural Features:

- 1、产品结构合理、密封可靠、性能优良、造型美观;
- 2、倒装压力平衡的结构, 开关动作轻;
- 3、阀体和密封面间设有油槽, 可随时通过油嘴向阀座注入密封油脂, 增加密封性能;
- 4、零件材质及法兰尺寸问题可根据实际工况或用户要求合理选配, 满足各种工况需要。

- 1、It has logical structure, reliable seal, excellent performance and nice design.
- 2、It has the structure of flip-chip balanceable pressure and light on/off operation.
- 3、An oil groove is set between valve body and seal surface, which may infuse the seal grease to increase the seal capability.
- 4、The part material and flange dimension may be selected according to current operating condition and users requirement, so that meet the requirements of various engineering.

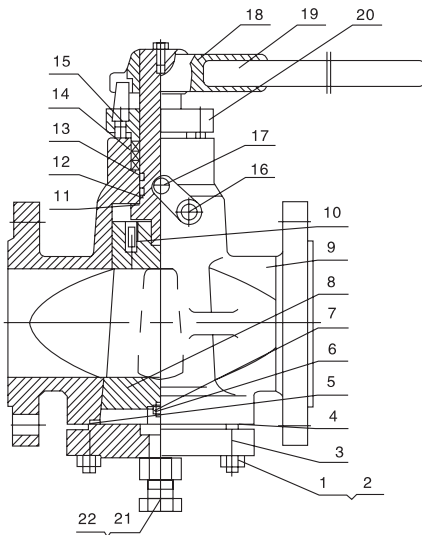
## 技术规范 Technical Specification:

结构形式 Structural formation	BC
驱动方式 Operation	手动 Manual
	电动 Electric-actuated
设计标准 Design standard	API 599、API 6D
结构长度 Face to Face	ASME B16.10
连接法兰 Flange Ends	ASME B16.5
试验和检验 Test & Inspection	API 598、API 6D

## 产品性能规范 Products Performance Specification:

公称压力(LB) Nominal pressure	壳体试验压力(MPa) Shell test	密封试验压力(MPa) Sealing test	适用温度(°C) Suitable temp.	适用介质 Suitable medium
150	3.0	2.2	≤80°C/300°C	水、蒸汽、油品等 Water oil & gas
300	7.5	5.5		
600	15.0	11.0		
900	22.5	16.5		

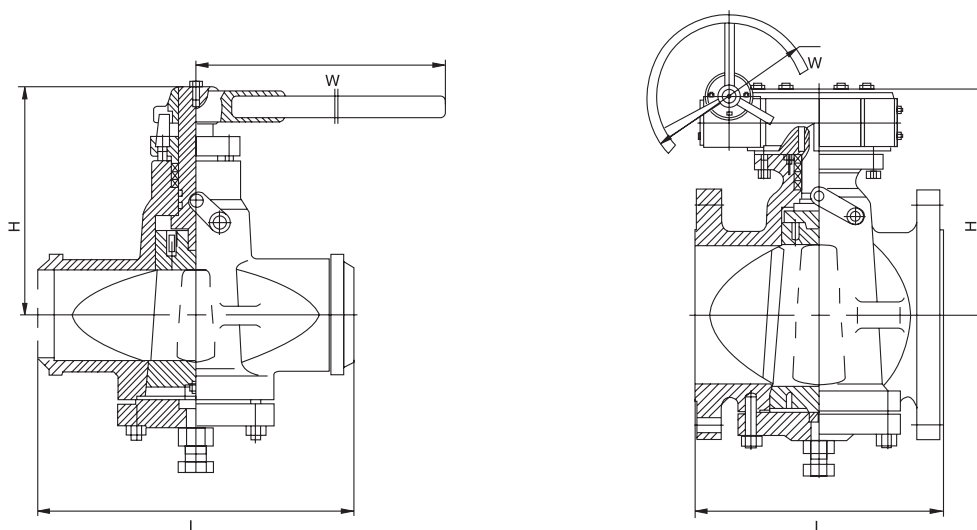
# 美标压力平衡式倒装油密封旋塞阀 INVERTED PRESSURE BALANCE LUBRICATED PLUG VALVE ACC.TO ANSI



## 主要零部件材质 Main Parts Materials:

序号NO.	名称 Part name	材质Material
1	双头螺栓 Bolt	ASTM A193-B7、A320-B8、A193-B8M
2	六角螺母 Nut	ASTMA194-2H、A194-8、A194-8M
3	阀盖 Cover	ASTM A216-WCB, A217-WC1、WC6、WC9、C5、C351-CF8、CF8M、CF3、CF3M
4	金属隔膜 Metal diaphragm	ASTM SS304、304L、316、316L
5	缠绕垫片 Wind gasket	柔性石墨+不锈钢 Flexible graphite+Stainless steel
6	球座 Set for ball	ASTM A276 410, A276 304、304L、316、316L
7	球 Ball	ASTM SS304、304L、316、316L
8	旋塞 Plug	ASTM A217 CA15, A182 F6a, A351 CF8、CF8M、CF3、CF3M
9	阀体 Body	ASTM A216-WCB, A217-WC1、WC6、WC9、C5、C351-CF8、CF8M、CF3、CF3M
10	止回阀 Check valve	UCA
11	中道垫片 Gasket	PTFE
12	阀杆 Stem	ASTM A182 F6a, A182 F304、F316、F304L、F316L
13	O型圈 "O" Ring	氟橡胶 Viton
14	螺栓 Bolt	ASTM A193-B7, A320-B8, A193-B8M
15	填料 Packing	柔性石墨 Flexible graphite
16	注脂嘴 Grease nozzle	UCA
17	注油嘴 Oil nozzle	UCA
18	手柄 Handhole	ASTM A216-WCB
19	管子 Pipe	ASTM A570
20	压盖 Gland	ASTM A216-WCB, A217-WC1、WC6、WC9、C5、A351-CF8
21	销紧螺母 Lock nut	ASTM A194-2H, A194-8, A194-8M
22	调整螺栓 Adjusting bolt	ASTM A193-B7, A320-B8, A193-B8M

美标压力平衡式倒装油密封旋塞阀 INVERTED PRESSURE  
BALANCE LUBRICATED PLUG VALVE ACC.TO ANSI



型号 Model		X47W/X347W-150LB														
口径 Size	mm	15	20	25	32	40	50	65	80	100	125	150	200	250	300	350
	in	1/2	3/4	1	1 1/4	1 1/2	2	2 1/2	3	4	5	6	8	10	12	14
L		108	117	127	140	165	178	190	203	229	254	267	292	330	356	381
H		180	180	185	200	214	215	250	270	300	340	365	400	450	510	590
W		400	400	500	500	600	600	820	820	300	300	320	320	350	380	380
重量(Kg)Weight		10	12	14	17	19	21	29	33	48	75	98	125	171	230	370
型号 Model		X47W/X347W-300LB														
口径 Size	mm	15	20	25	32	40	50	65	80	100	125	150	200	250	300	350
	in	1/2	3/4	1	1 1/4	1 1/2	2	2 1/2	3	4	5	6	8	10	12	14
L		140	152	165	178	190	216	241	283	305	381	403	419	457	502	762
H		180	180	185	200	210	215	250	270	300	340	365	400	450	510	590
W		400	400	500	600	600	820	1000	1000	300	300	320	320	350	380	380
重量(Kg)Weight		12	14	16	19	21	24	31	36	61	86	130	190	255	380	560
型号 Model		X47W/X347W-600LB														
口径 Size	mm	15	20	25	32	40	50	65	80	100	125	150	200	250	300	350
	in	1/2	3/4	1	1 1/4	1 1/2	2	2 1/2	3	4	5	6	8	10	12	14
L		165	190	216	229	241	292	330	356	432	508	559	660	787	838	889
H		180	180	185	200	210	215	250	270	300	340	365	400	450	510	590
W		400	400	500	500	600	600	820	820	300	300	320	320	350	380	380
重量(Kg)Weight		14	16	18	20	24	29	35	47	91	129	210	320	660	920	1250
型号 Model		X47W/X347W-900LB														
口径 Size	mm	15	20	25	32	40	50	65	80	100	125	150	200	250	300	350
	in	1/2	3/4	1	1 1/4	1 1/2	2	2 1/2	3	4	5	6	8	10	12	14
L		216	229	254	279	305	368	419	381	457	559	610	737	838	965	1029
H		180	180	185	200	210	215	250	270	300	340	365	400	450	510	590
W		400	400	500	600	600	820	1000	1000	300	300	320	320	350	380	380
重量(Kg)Weight		17	29	21	24	30	37	44	65	110	160	255	380	810	1050	1460

# 法兰连接美标提升式硬密封旋塞阀 FLANGE-CONNECTION LIFTING PLUG VALVE ACC.TO ANSI



## 产品结构特点 PRODUCT STRUCTURAL FEATURES:

法兰连接美标提升式硬密封旋塞阀适用于公称压力CLASS150-1500LBS，工作温度-29-550℃的石油、化工、制药、化肥、电力行业等各种工况的管路上，切断或接通管路介质。

Flange-connection lifting plug valve acc. to ANSL is applicable to the cutting and connection of pipelines medium that are used in various industries such as petroleum, chemical industry, pharmacy, chemical fertilizer, power industry etc under niminal pressure of CLASS150-1500LBS, and working temperature of -29-550°C.

## 其主要结构特点 Main Structural Features:

- 1、产品结构合理、密封可靠、性能优良、造型美观。
- 2、阀门的启闭过程是在密封面脱离的装态下进行的，不会造成密封面的磨损。
- 3、双向流动，安装使用更方便。
- 4、零件材质及法兰尺寸可根据实际工况或用户要求合理选配，满足各种工程需要。

- 1、The product has reasonable structure, reliable sealing, excellent performance and beautiful appearance.
- 2、Opening and closing of the valve is carride out while the sealed surface is taken off, so it will not cause abraslon on the sealed surface.
- 3、Its characteristic double-direction flow makes installation and use more Convenient.
- 4、The materials of the parts and sizes of flanges can be reasonably configured according the actual operation condition of the requieements of the customersm, so as to meet the various needs of engineering.

## 阀门的启闭工作原理 Principle of Opening and Closing of the Valve

阀门的启闭过程：开启阀门时，要先旋转手轮，使塞子上升，与密封面脱离，再旋转手柄90°，使塞子的通道和阀体的通道相通，连到开启的目的。而关闭的过程是先旋转手柄90°，使塞子的通道和阀体的通道垂直，再旋转手轮，使塞子下降，连接密封。

Process of opening and closing of the valve. when opening the valve, first of all, turn the hand wheel to make the plug lifted and separated with the sealed surface, then turn the handle by 90 degree to connect the channel of plug to the channel of valve body. so that the valve is opened; when closing the valve, first of all, turn the handle by 90 degree to make the channel of plug vertical to the channel of valve body, and then turn the hand wheel to descend the plug, so that the valve is closed.

## 技术规范 Technical Specification:

结构形式 Structural formation	BC
驱动方式 Drtving ranner	BB-BG-QS&Y 手柄、伞齿轮、手柄 Hand wheel、bevel gear、wrench
设计标准 Design standard	API 599、API 6D
结构长度 Face to Face	ASME B16.10
连接法兰 Flange Ends	ASME B16.5
试验和检验 Test & Inspection	API 598、API 6D

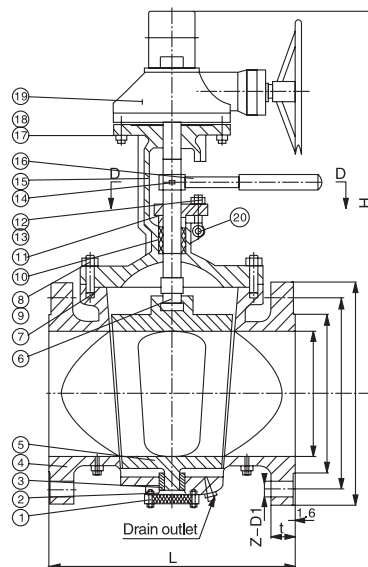
※注：阀门的连接法兰尺寸可根据用户要求设计制造。

Note: the size of serial valve connecting flange can be designed according to customers' requirement.

## 产品性能规范 Products Performance Specification:

公称压力(LB) Norminal pressure	壳体试验压力(MPa) Shell test	密封试验压力(MPa) Sealing test	适用温度(°C) Suitable temp.	适用介质 Suitable medium
150	3.0	2.2	≤300°C/350°C	水、蒸汽、油品等 Water oil & gas
300	7.5	5.5		
600	15.0	11.0		
900	22.5	16.5		

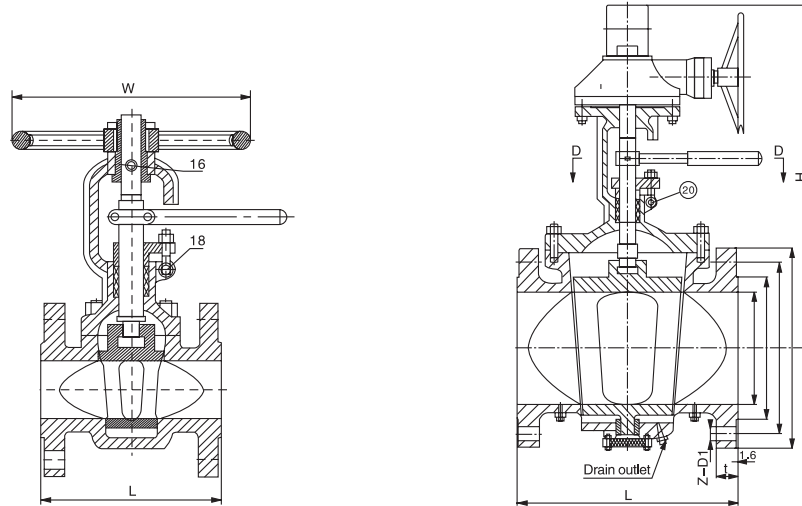
法兰连接美标提升式硬密封旋塞阀  
 FLANGE-CONNECTION LIFTING PLUG VALVE ACC.TO ANSI



主要零部件材质 Main Parts Materials:

序号NO.	名称 Part name	材质Material
1	螺栓 Bolt	A193 B16
2	垫片 Gasket	SS304+石墨Graphite
3	底盖 Under plate	A217 C5
4	阀体 Body	A217 C5
5	旋塞 Plug	A217 C5+氮化Nitriding
6	阀杆 Stem	A276 410
7	垫片 Gasket	SS304+石墨Graphite
8	螺栓 Bolt	A193 B16
9	螺母Nut	A194 7
10	填料 Packing	柔性石墨 Flexible Graphite
11	压盖 Gland	A217 C5
12	螺栓 Bolt	A193 B16
13	螺母Nut	A194 7
14	销Key	SS304
15	阀盖Cover	A217 C5
16	手柄Handle	A570
17	螺栓 Bolt	A193 B16
18	螺母Nut	A194 7
19	齿轮Gear	UCA
20	销Key	SS304

法兰连接美标提升式硬密封旋塞阀  
FLANGE-CONNECTION LIFTING PLUG VALVE ACC.TO ANSI



型号 Model		TSX543W/TSX43W-150LB														
口径 Size	mm	15	20	25	32	40	50	65	80	100	125	150	200	250	300	350
	in	1/2	3/4	1	1 1/4	1 1/2	2	2 1/2	3	4	5	6	8	10	12	14
L		108	117	127	140	165	178	190	203	229	254	267	292	330	356	381
H		190	195	225	260	280	310	250	395	300	470	535	590	630	680	720
W		280	280	280	300	300	300	820	300	300	340	400	450	450	500	500
重量(Kg)Weight		9	10	11	17	19	23	29	32	48	82	98	130	178	250	380
型号 Model		TSX543W/TSX43W-300LB														
口径 Size	mm	15	20	25	32	40	50	65	80	100	125	150	200	250	300	350
	in	1/2	3/4	1	1 1/4	1 1/2	2	2 1/2	3	4	5	6	8	10	12	14
L		140	152	165	178	190	216	241	283	305	381	403	419	457	502	762
H		190	195	225	260	280	310	340	395	435	470	535	590	630	680	720
W		280	280	280	300	300	300	300	300	300	340	400	450	450	500	500
重量(Kg)Weight		10	12	14	19	21	28	34	39	75	95	135	200	255	415	650
型号 Model		TSX543W/TSX43W-600LB														
口径 Size	mm	15	20	25	32	40	50	65	80	100	125	150	200	250	300	350
	in	1/2	3/4	1	1 1/4	1 1/2	2	2 1/2	3	4	5	6	8	10	12	14
L		165	190	216	229	241	292	330	356	432	508	559	660	787	838	889
H		190	195	225	260	280	310	340	395	435	470	535	590	630	680	720
W		280	280	280	300	300	300	300	300	300	340	400	450	450	500	500
重量(Kg)Weight		13	14	19	23	25	32	40	55	105	139	300	440	730	1150	1570
型号 Model		TSX543W/TSX43W-900LB														
口径 Size	mm	15	20	25	32	40	50	65	80	100	125	150	200	250	300	350
	in	1/2	3/4	1	1 1/4	1 1/2	2	2 1/2	3	4	5	6	8	10	12	14
L		216	229	254	279	305	368	419	381	457	559	610	737	838	965	1029
H		190	195	225	260	280	310	340	395	435	470	535	590	630	680	720
W		280	280	280	300	300	300	300	300	300	340	400	450	450	500	500
重量(Kg)Weight		16	17	26	30	33	39	50	70	137	181	397	590	860	1470	1880

# 轨道旋塞阀 (将军阀) ORBIT PLUG VALVE (GENERAL VALVE)



## 产品结构特点 PRODUCT STRUCTURAL FEATURES:

轨道旋塞阀(将军阀)将军阀适用于公称压力CLASS150-900LBS, 工作温度-29°C~120°C的石油、化工、制药、化肥、电力行业等各种工况的管路上, 切断或接通管路介质。

Orbit plug valve (general valve) is applicable to the cutting and connection of pipelines medium that are used in various industries such as petroleum, chemical industry, chemical fertilizer, power industry etc under nominal pressure of CLASS150-900LBS, and working temperature of -29°C - 180°C.

## 其主要结构特点 Main Structural Features:

- 1、产品结构合理、密封可靠、性能优良、造型美观。
- 2、它的密封性是通过阀门四周的密封圈来实现的。独特的燕尾槽保证和固定密封圈。
- 3、双向流动, 安装使用更方便。
- 4、零件材质及法兰尺寸可根据实际工况或用户要求合理选配, 满足各种工程需要。

- 1、The product has reasonable structure, reliable sealing, excellent performance and beautiful appearance.
- 2、Its sealing is realized by the sealing rings around the valve disc. It has unique protection of wallow-tailed sink and fixed sealing rings
- 3、Its characteristic double-direction flow makes installation and use more Convenient.
- 4、The materials of the parts and sizes of flanges can be reasonably configured according the actual operation condition of the requirements of the customers, so as to meet the various needs of engineering.

## 将军阀的工作原理 Operation Principle of General Valve:

当阀门全开的状态下, 塞子的通道与阀体的通道对齐, 能保证理想的最低压力降。

当转动手轮, 塞子将朝关闭的方向转动, 同时带动阀片转动90度, 当继续转动手轮, 塞子将会下压, 使阀片的两侧张开, 阀片将紧紧的压在阀座上, 使阀门关闭。

当手轮向反方向转动时, 首先使塞子向上运动, 使阀片与阀座脱离, 继续转动手轮, 使塞子带动阀片转动90度, 最后塞子的通道与阀体的通道对齐, 使阀门处于全开的状态。

该阀门的优点是阀门在开启的关闭过程中, 阀片和阀座处于脱离状态, 关闭的过程是零摩擦, 不会使密封面磨损, 同时密封采用软密封, 使阀门在关闭时为零泄露。

When the valve is fully opened, the channel of plug is in alignment with the channel of valve body, which can ensure ideal and lowest decrease on pressure. When the hand wheel is turned, the plug will rotate toward the closing direction, and at the same time draft the rotation of valve disc by 90 degree, when the hand wheel is turned further on, the plug will be pressed down, and make the valve disc open to two sides, so that the valve disc will be in firm contact with the valve seat and close the valve.

The advantage of this type of valve is, during the opening and closing of valve, the disc and valve seat is separated, and there is no friction and thus sealing face is no abrasion in the process; at the same time, soft seal is applied for sealing, so that there will be no leakage in the process of closing. When the hand wheel is turned inversely, first of all the plug will move upward, and the valve disc and valve seat will be separated, if the hand wheel is turned further on, till the valve disc is turned by 90 degree driven by the plug, and finally the channel of plug will be in alignment with the channel of valve body, so that the valve is fully opened.

The advantage of this type of valve is, during the opening and closing of valve, the disc and valve seat is separated, and there is no friction and thus sealing face is no abrasion in the process; at the same time, soft seal is applied for sealing, so that there will be no leakage in the process of closing.

## 技术规范 Technical Specification:

结构形式 Structural formation	BC
驱动方式 Drtving ranner	BB-BG 手柄、伞齿轮、电动 Hand wheel、bevel gear、electric-actuated
设计标准 Design standard	API 599、API 6D
结构长度 Face to face	ASME B16.10
连接法兰 Flange ends	ASME B16.5
试验和检验 Test & inspection	API 598、API 6D

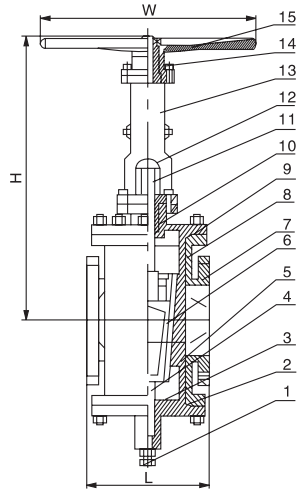
※注: 阀门的连接法兰尺寸可根据用户要求设计制造。

Note: the size of serial valve connecting flange can be designed according to customers' requirement.

## 产品性能规范 Products Performance Specification:

公称压力(LB) Nominal pressure	壳体试验压力(MPa) Shell test	密封试验压力(MPa) Sealing test	适用温度(°C) Suitable temp.	适用介质 Suitable medium
150	3.0	2.2	≤ 120°C	水、蒸汽、油品等 Water oil & gas
300	7.5	5.5		
600	15.0	11.0		
900	22.5	16.5		

轨道旋塞阀 ( 将军阀 )  
ORBIT PLUG VALVE (GENERAL VALVE)

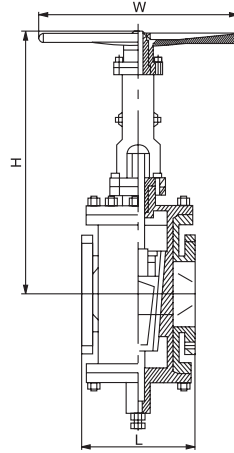


主要零部件材质 Main Parts Materials:

序号NO.	名称 Part name	材质Material
1	螺栓 Bolt	ASTM A193-B7, A320-B8, A193-B8M
2	垫片 Gasket	聚四氟乙烯PTFE
3	下盖 Down cover	ASTM A216-WCB, A217-WC1, WC6, WC9, C5, A351-CF8, CF8M, CF3, CF3M
4	阀杆 Stem	ASTM A182 F6a, A182 F22, F304, F316, F304L, F316L
5	密封圈 Sealing ring	氟橡胶Viton、PTFE
6	旋塞 Plug	ASTM A216 WCB, A182 F6a, A351 CF8, CF8M, CF3, CF3M
7	阀体 Body	ASTM A216-WCB, A217-WC1, WC6, WC9, C5, A351-CF8, CF8M, CF3, CF3M
8	滑片 Slip	ASTM SS410, 304, 304L, 316, 316L
9	垫片 Gasket	聚四氟乙烯PTFE
10	阀盖 Cover	ASTM A216-WCB, A217-WC1, WC6, WC9, C5, A351-CF8, CF8M, CF3, CF3M
11	阀杆 Stem	ASTM A182 F6a, A182 F22, F304, F316, F304L, F316L
12	连接器 Joint	AISI 1045, Ss304, 316
13	支架 Yoke	ASTM A216-WCB, A351-CF8, CF8M, CF3, CF3M
14	阀杆螺母 Stem nut	铜合金ZQA19-4
15	手轮 Hand wheel	ASME A536 60-40-18, A216-WCB



轨道旋塞阀 ( 将军阀 )  
ORBIT PLUG VALVE (GENERAL VALVE)



型号 Model		AX43-150LB														
口径 Size	mm	15	20	25	32	40	50	65	80	100	125	150	200	250	300	350
	in	1/2	3/4	1	1 1/4	1 1/2	2	2 1/2	3	4	5	6	8	10	12	14
L		108	117	127	140	165	178	190	203	229	254	267	292	330	356	381
H		230	260	300	340	380	435	460	490	525	570	625	700	780	870	980
W		120	140	140	180	200	220	260	280	300	340	400	450	450	500	500
重量(Kg)Weight		10	12	18	25	29	340	39	50	65	95	135	210	275	350	605
型号 Model		AX43-300LB														
口径 Size	mm	15	20	25	32	40	50	65	80	100	125	150	200	250	300	350
	in	1/2	3/4	1	1 1/4	1 1/2	2	2 1/2	3	4	5	6	10	8	12	14
L		140	152	165	178	190	216	241	283	305	381	403	457	419	502	762
H		230	260	300	340	380	435	460	490	525	570	625	630	780	870	980
W		120	140	140	180	200	220	260	280	300	340	400	450	450	500	500
重量(Kg)Weight		11	13	20	27	31	37	44	60	82	115	165	225	305	405	650
型号 Model		AX43-600LB														
口径 Size	mm	15	20	25	32	40	50	65	80	100	125	150	200	250	300	350
	in	1/2	3/4	1	1 1/4	1 1/2	2	2 1/2	3	4	5	6	8	10	12	14
L		165	190	216	229	241	292	330	356	432	508	559	660	787	838	889
H		230	260	300	340	380	435	460	490	525	570	625	700	780	870	980
W		120	140	140	180	200	220	260	280	300	340	400	450	450	500	500
重量(Kg)Weight		13	15	12	29	34	41	54	680	99	128	191	258	430	650	870
型号 Model		AX43-900LB														
口径 Size	mm	15	20	25	32	40	50	65	80	100	125	150	200	250	300	350
	in	1/2	3/4	1	1 1/4	1 1/2	2	2 1/2	3	4	5	6	8	10	12	14
L		216	229	254	279	305	368	419	381	457	559	610	737	838	965	1029
H		230	260	300	340	380	435	460	490	525	570	625	700	780	870	980
W		120	140	140	180	200	220	260	280	300	340	400	450	450	500	500
重量(Kg)Weight		15	19	24	32	38	47	62	75	115	147	220	379	490	720	1020

# 美标卡套软密封旋塞阀 SLEEVE TYPE SDFT SEALING PLUG VALVE ACC.TO ANSI



## 产品结构特点 PRODUCT STRUCTURAL FEATURES:

美标卡套式软密封旋塞阀适用于公称压力CLASS150~900LBS，工作温度-29℃~180℃的石油、化工、制药、化肥、电力行业等各种工况的管路上，切断或接通管路介质。

Sleeve type soft sealing plug valve acc. to ANSI is applicable to the cutting and connection of pipelines medium that are used in various industries such as petroleum, chemical industry, pharmacy, chemical fertilizer, power industry etc under nominal pressure of CLASS150~900LBS, and working temperature of -29~180℃.

## 其主要结构特点 Main Structural Features:

- 1、产品结构合理、密封可靠、性能优良、造型美观。
  - 2、它的密封性是通过卡套四周的密封面来实现的。独特的360°金属唇边保证固定卡套。
  - 3、阀门没有空腔给介质积聚。
  - 4、金属唇边在旋转时提供自洁的作用，适合于粘稠和易结垢的工况。
  - 5、双向流动，安装使用更方便。
  - 6、零件材质及法兰尺寸可根据实际工况或用户要求合理选配，满足各种工程需要。
- 1、The product has reasonable structure, reliable sealing, excellent performance and beautiful appearance.
  - 2、Its sealing is realized by the sealing face around the sleeve. It has unique 360 degree metal edge for protection and fixing of the Sleeve.
  - 3、There is no cavity in the valve for accumulation of medium.
  - 4、Metal edge provides the function of self-cleaning when the plug is rotated, applicable to the operation condition that is glutinous and apt to smudge.
  - 5、Its characteristic double-direction flow makes installation and use more Convenient.
  - 6、The materials of the parts and sizes of flanges can be reasonably configured according the actual operation condition of the requirements of the customers, so as to meet the various needs of engineering.

## 技术规范 Technical Specification:

结构形式 Structural formation	BC
驱动方式 Driving manner	手柄、蜗轮蜗杆传动、气动、电动 Wrench wheel, worm & worm gear, pneumatic, electric-actuated
设计标准 Design standard	API 599、API 6D
结构长度 Face to face	ASME B16.10
连接法兰 Flange ends	ASME B16.5
试验和检验 Test & inspection	API 598、API 6D

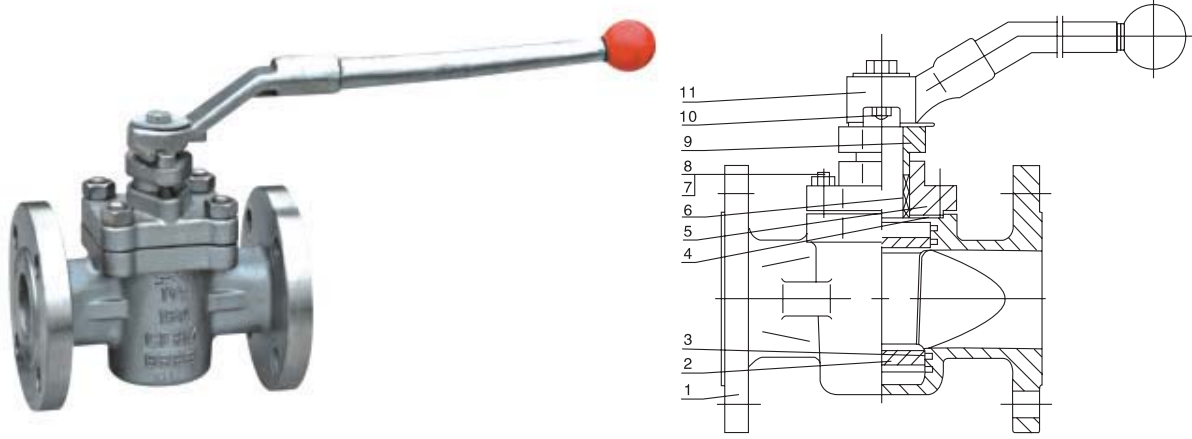
※注：阀门的连接法兰尺寸可根据用户要求设计制造。

Note: the size of serial valve connecting flange can be designed according to customers' requirement.

## 产品性能规范 Products Performance Specification:

公称压力(LB) Nominal pressure	壳体试验压力(MPa) Shell test	密封试验压力(MPa) Sealing test	适用温度(℃) Suitable temp.	适用介质 Suitable medium
150	3.0	2.2	≤ 120℃/200℃	水、蒸汽、油品等 Water oil & gas
300	7.5	5.5		
600	15.0	11.0		
900	22.5	16.5		

美标卡套软密封旋塞阀  
SLEEVE TYPE SDFT SEALING PLUG VALVE ACC.TO ANSI

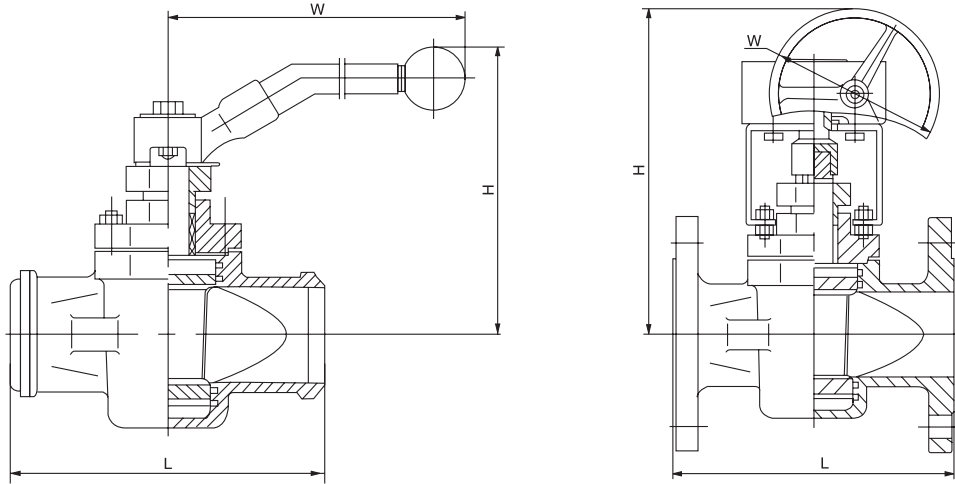


主要零部件材质 Main Parts Materials:

序号NO.	名称 Part name	材质Material
1	阀体 Body	ASTM A216-WCB, A217-WC1, WC6, WC9, C5, A351-CF8, CF8M, CF3, CF3M
2	旋塞 Plug	ASTM A217 CA15, A182 F6a, CF8, CF8M, CF3, CF3M
3	卡套 Sleeve (阀座 Seat)	聚四氟乙烯 PTFE, PPL
4	中道垫片 Gasket	聚四氟乙烯 PTFE, 柔性石墨+不锈钢 Flexible graphite+stainless steel
5	阀盖 Cover	ASTM A216-WCB, A217-WC1, WC6, WC9, C5, A351-CF8, CF8M, CF3, CF3M
6	填料 Packing	聚四氟乙烯 PTFE, Graphite
7	螺栓 Bolt	ASTM A193-B7, A320-B8, A193-B8M
8	螺母 Nut	ASTM A194-2H, A194-8, A194-8M
9	压盖 Gland	ASTM A216-WCB, A217-WC1, WC6, WC9, C5, A351-CF8
10	调整螺栓 Adjusting gasket	ASTM A193-B7, A320-B8, A193-B8M
11	手柄 Wrench	ASTM, A216-WCB

型号 Model		X343F/X43F-150LB														
口径 Size	mm	15	20	25	32	40	50	65	80	100	125	150	200	250	300	350
	in	1/2	3/4	1	1 1/4	1 1/2	2	2 1/2	3	4	5	6	8	10	12	14
L		108	117	127	140	165	178	190	203	229	254	267	292	330	356	381
H		110	115	115	135	140	150	165	180	380	460	520	580	620	680	760
W		175	175	175	220	280	305	350	405	300	300	320	320	350	380	450
重量(Kg) Weight		8.5	9.5	10.5	12	14	18	22	26	40	60	70	130	219	381	570

美标卡套软密封旋塞阀  
SLEEVE TYPE SDFT SEALING PLUG VALVE ACC.TO ANSI



型号 Model		X343F/X43F-300LB														
口径 Size	mm	15	20	25	32	40	50	65	80	100	125	150	200	250	300	350
	in	1/2	3/4	1	1 1/4	1 1/2	2	2 1/2	3	4	5	6	8	10	12	14
L		140	152	165	178	190	216	241	283	305	381	403	419	457	502	762
H		110	115	115	135	140	150	165	180	380	460	502	580	620	680	760
W		175	175	175	220	280	305	350	405	300	300	320	320	350	380	450
重量(Kg)Weight		9.5	10.5	12	14	16	20	24	29	53	75	85	185	230	390	550
型号 Model		X343F/X43F-600LB														
口径 Size	mm	15	20	25	32	40	50	65	80	100	125	150	200	250	300	350
	in	1/2	3/4	1	1 1/4	1 1/2	2	2 1/2	3	4	5	6	8	10	12	14
L		165	190	216	229	241	292	330	356	432	508	559	660	787	838	889
H		110	115	115	135	140	150	165	180	380	460	520	580	620	680	760
W		175	175	175	220	280	305	350	405	300	300	320	320	350	380	450
重量(Kg)Weight		11	13	17	20	23	27	31	36	72	98	141	245	330	515	710
型号 Model		X343F/X43F-900LB														
口径 Size	mm	15	20	25	32	40	50	65	80	100	125	150	200	250	300	350
	in	1/2	3/4	1	1 1/4	1 1/2	2	2 1/2	3	4	5	6	8	10	12	14
L		216	229	254	279	305	368	419	381	457	559	610	737	838	965	1029
H		110	115	115	135	140	150	165	180	380	460	520	580	620	680	760
W		175	175	175	220	280	305	350	405	300	300	320	320	350	380	450
重量(Kg)Weight		13	16	21	24	28	32	40	47	91	117	165	285	420	610	860

※注：四寸及以上为蜗杆轮操作4" or above with worm gear

## 三通、四通旋塞阀 3-WAY、4-WAY PLUG VALVE



### 产品结构特点 PRODUCT STRUCTURAL FEATURES:

三通、四通旋塞阀适用于压力CLASS150~900LBS,PN1.0~16.0工作温度-29~550℃的石油、化工、制药、化肥、电力行业等各种工况的管路上，多用于改变介质流动方向或进行介质分配。

3-way、4-way plug valve is applicable to change the media flowing direction or to distribute the media, that are used in various industries such as, petroleum, chemical industry, pharmacy, chemical fertilizer, power, Industry etc. under nominal pressure class 150~900LBS, PN1.0~16.0, Working temperature -29°C ~ 550°C.

### 其主要结构特点 Main Structural Features:

- 1、产品结构合理、密封可靠、性能优良、造型美观；
  - 2、可根据管路工况要求，设计成多种流通形式(如L型、T型等)、多种材质(如铸铁、铸钢、不锈钢)、多种密封形式(如硬密封、卡套密封、油密封等)的三通、四通旋塞阀。
  - 3、零件材质及法兰尺寸可据实际工况或用户要求合理选配，满足各种工程需要。
- 1、The product has reasonable structure, radial sealing, excellent performance and beautiful appearance.
  - 2、According to different conditions, the 3-way、4-way plug valve can be designed into diverseful media flowing forms(eg."L" type or "T" type) or all kinds of material (eg.Iron、cast steel、stainless steel) or unlike sealing forms(eg. Metal to metal, sleeve Type,lubricated, etc)。
  - 3、The materials of the parts and sizes of flanges can be reasonably configured according the actual operation condition of the requirements of the customers, so as to meet the various needs of engineering.

### 技术规范 Technical Specification:

结构形式 Structural formation	BB-BG
驱动方式 Drtving ranner	手柄、蜗轮蜗杆传动、气动、电动 Wrench wheel, worm & worm gear、pneumatic, electric-actuated
设计标准 Design standard	API 599、API 6D、GB12240
结构长度 Face to face	ASME B16.10、GB12221、DIN3202
连接法兰 Flange ends	ASME B16.5、JB79、GB9113、DIN2543-2545
试验和检验 Test & inspection	API590、API6D、GB13927、DIN3230

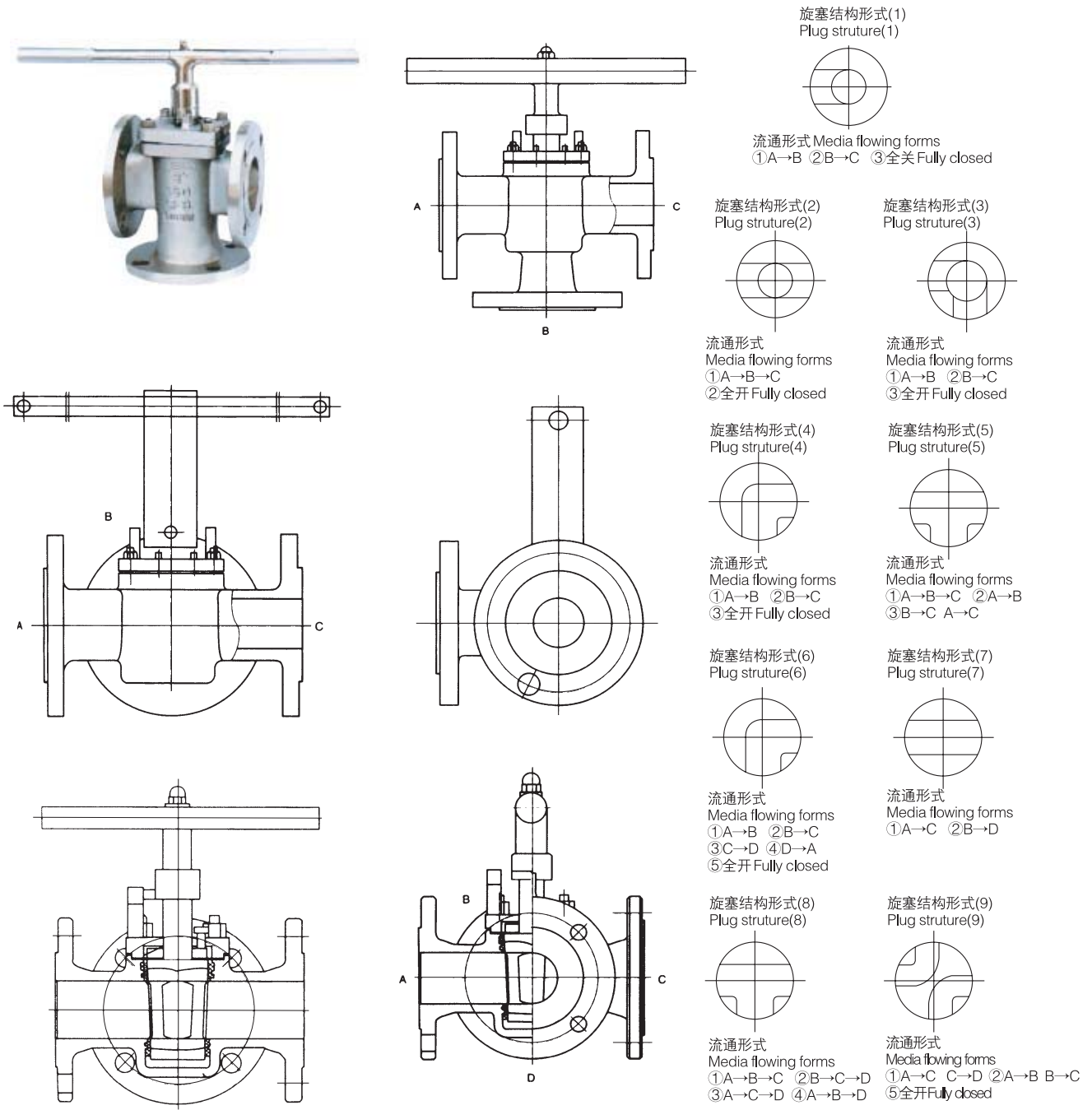
### 产品性能规范 Products Performance Specification:

公称压力(LB) Norminal pressure	壳体试验压力(MPa) Shell test	密封试验压力(MPa) Sealing test	公称压力(LB) Norminal pressure	壳体试验压力(MPa) Shell test	密封试验压力(MPa) Sealing test
150	3.0	2.2	1.6	2.4	1.76
300	7.5	5.5	2.5	3.75	2.75
600	15.0	11.0	4.0	6.0	4.4
900	22.5	16.5	6.4	9.6	7.04
			10.0	15.0	11.0
			16.0	24.0	17.6

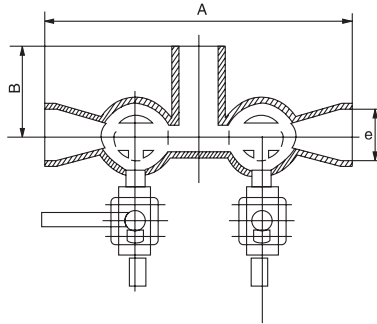
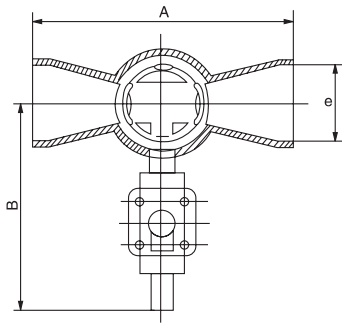
# 三通、四通旋塞阀 3-WAY、4-WAY PLUG VALVE



## 三通、四通旋塞阀的几种通孔形式及介质流动形式 Bore forms & media flowing forms for 3-way, 4-way plug valve



单(双)冲洗旋塞阀  
SINGLE (DOUBLE) FLUSH PLUG VALVE

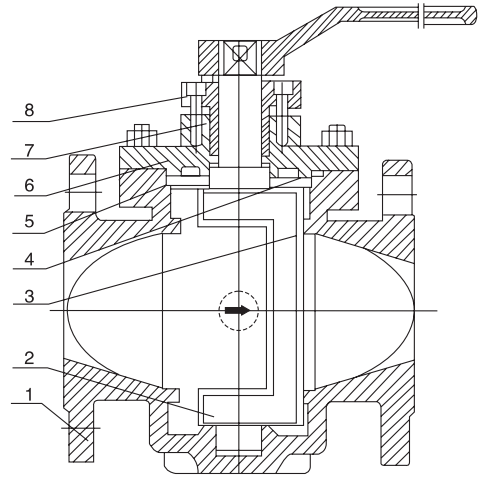


公称通径 NPS Nominal diameter(in)	150LB单行洗(SINGLE FLUSH)			公称通径 NPS Nominal diameter(in)	150LB双行洗(SINGLE FLUSH)			
	A	B	Φ		A	B	C	Φ
2	216	278	54.8	2	356	115	278	54.8
3	283	278	82.8	3	406	140	293	82.8
4	305	293	108.2	4	458	150	308	108.2
6	403	308	161.5	6	534	200	320	161.5
8	419	320	211.6	8	584	270	270	211.6
10	457	333	264.7	10	660	350	350	264.7

公称通径 NPS Nominal diameter(in)	300LB单行洗(SINGLE FLUSH)			公称通径 NPS Nominal diameter(in)	300LB双行洗(SINGLE FLUSH)			
	A	B	Φ		A	B	C	Φ
2	216	278	54.8	2	432	115	278	54.8
3	283	278	82.8	3	566	140	293	82.8
4	305	293	108.2	4	610	150	308	108.2
6	403	308	161.5	6	806	200	320	161.5
8	419	320	211.6	8	838	270	270	211.6
10	457	333	264.7	10	914	350	350	264.7

## 偏心旋塞阀 ECCENTRIC PLUG VALVE



### 特征 Features

- 1、双偏心设计，低摩擦开启和关闭，确保零汇漏。
- 2、含镍=90%，3mm厚的堆焊阀座，或高性能树脂阀座，能满足多种的耐腐蚀要求。
- 3、V型组合密封圈，可在不卸下操作装置的情况下进行更换。
- 4、密封胶加注口设计，可延长阀门使用周期。
- 5、阀轴承为自润滑材料，无须加润滑脂，对阀轴磨损很小。
- 6、旋塞体模压热包胶，无橡胶脱落和冲刷腐蚀的担忧。
- 7、阀盖和阀体用O形圈密封，螺栓数量减少，方便维修。
- 8、理想的线性曲线，可作为调节阀使用。
- 9、提供阀门进出口压力表接头，方便用户控制和测定流量。
- 10、直通流道，圆柱形阀体设计，沉积物不容易规格。
- 11、开度显示和开度记忆，方便用户操作。
- 12、可配置手动、电动、气动操作。

- 1.Eccentric design, lower friction, zero leakage.
- 2.Welded-in stainless steel, nickel or resin seat can meet corrosion resistance requirements of various medium.
- 3.V type sealing ring can be changed on line without disassembling the operator.
- 4.Self-lubricated bearing provides very easy operation and low operation wearing.
- 5.Ductile iron plug wholly covered with rubber for drip-light shut off assures excellent ercde and corrosion resistance.
- 6.O-ring seals provide easy maintenance.
- 7.Liner characteristic can be used for throttling purpose.
- 8.Straight through flow design and columniform body can meet max, flow capacity requirements without deposits.
- 9.Opening indication provides easy operation.
- 10.Available for manual, pneumatic and electric and electric actuator operation.



# 偏心旋塞阀 ECCENTRIC PLUG VALVE



型号 Model		X343X/X43X-150LB														
口径 Size	mm	15	20	25	32	40	50	65	80	100	125	150	200	250	300	350
	in	1/2	3/4	1	1 1/4	1 1/2	2	2 1/2	3	4	5	6	8	10	12	14
L-RF		108	117	127	140	165	178	190	203	229	254	267	292	330	356	381
L-BW		152	178	208	216	229	267	305	330	356	381	394	457	533	610	686
H		59	63	75	95	107	142	152	178	252	272	342	398	495	580	625
W		400	400	500	500	600	600	820	820	300	300	320	320	350	380	380
重量(Kg)Weight		10	12	14	17	19	21	29	33	48	75	98	125	171	230	370
型号 Model		X343X/X43X-300LB														
口径 Size	mm	15	20	25	32	40	50	65	80	100	125	150	200	250	300	350
	in	1/2	3/4	1	1 1/4	1 1/2	2	2 1/2	3	4	5	6	8	10	12	14
L-RF		140	152	165	178	190	216	241	283	305	381	403	419	457	502	762
L-BW		152	178	208	216	229	267	305	330	356	381	457	521	559	635	762
H		59	63	75	95	107	142	152	178	252	272	342	398	495	580	625
W		400	400	500	500	600	820	1000	1000	300	300	320	320	350	380	380
重量(Kg)Weight		12	14	16	19	21	24	31	36	61	86	130	190	255	380	560
型号 Model		X343X/X43X-600LB														
口径 Size	mm	15	20	25	32	40	50	65	80	100	125	150	200	250	300	350
	in	1/2	3/4	1	1 1/4	1 1/2	2	2 1/2	3	4	5	6	8	10	12	14
L-RF • BW		165	190	216	229	241	292	330	356	432	508	559	660	787	838	889
H		59	63	75	95	107	142	152	178	252	275	342	398	495	580	625
W		400	400	500	500	600	600	820	820	300	300	320	320	350	380	380
重量(Kg)Weight		14	16	18	20	24	29	35	47	91	129	210	320	660	920	1250
型号 Model		X343X/X43X-900LB														
口径 Size	mm	15	20	25	32	40	50	65	80	100	125	150	200	250	300	350
	in	1/2	3/4	1	1 1/4	1 1/2	2	2 1/2	3	4	5	6	8	10	12	14
L-RF • BW		216	229	254	279	305	368	419	381	457	559	610	737	838	965	1029
H		59	63	75	95	107	142	152	178	252	272	342	398	495	580	625
W		400	400	500	600	600	820	1000	1000	300	300	320	320	350	380	380
重量(Kg)Weight		17	29	21	24	30	37	44	65	110	160	255	380	810	1050	1460